

# Manichini

CHI TI MUOVE FI LI DI O SA TA NA CHI TI MUO VE FI LI MASCHIO

4  
FEM MI NA CHI TI PRE GA CHI TI O DIA CHI TI SPET TE RA' QUAL

7  
CU NO QUAL CHE CO SA FI LI CER TO MUO VE RA'

9  
MA NICH I NI SEN ZA VOL TO SEN ZA TA' FI LI SOTTI LI NI TI PER FA

12  
TA LI TA' UN DE STI NO GUA LE U NA STES SA VE RI TA' IL

15  
MA NI CHI NO UN'A NIMA E FOR SE NON LO SA E' TROP PO

19  
PRE STO PER ANDA RE TROP PO PRE STO PER CA PI RE TROP PO

21  
PRE STO PER MO RI RE PER CHE' PRE STO NON SI SA

23  
QUAN DO LA RA GIO NE TUOI FI LI MUO VE RA'

25  
E' SOL TAN TO TEM PO PO PRE STO RI VE RA'

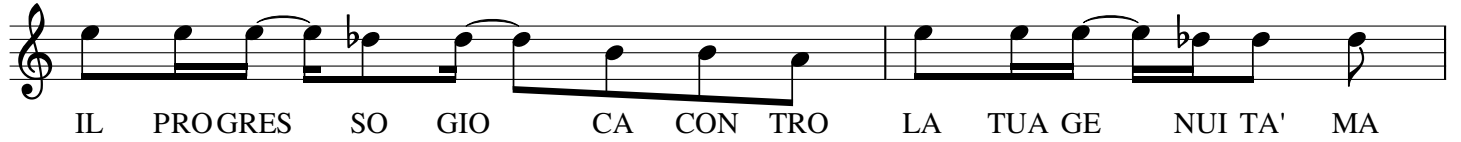
27



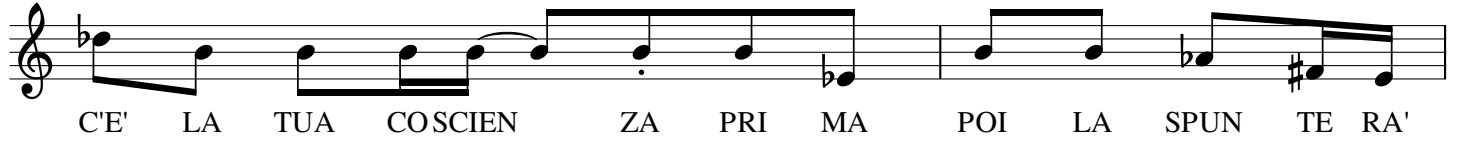
29



31



33



35



38



40



42



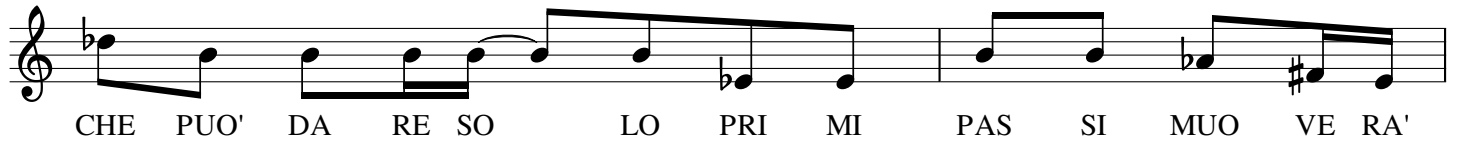
44



46



49



51

Musical staff for line 51, starting with a treble clef and a key signature of one flat (B-flat). The melody consists of eighth and quarter notes. The lyrics are: QUAN DO MA NI CHI NI UN SI GNI FI CA TO DAI

53

Musical staff for line 53, continuing the melody from the previous line. The lyrics are: FRA QUEI MA NI CHI NI TU NON RE STE RAI I

55

Musical staff for line 55, featuring a key signature change to one sharp (F#). The melody continues with eighth and quarter notes. The lyrics are: MA NI CHI NI CRE SCO NO MA LO RO RE STE RA' LA

57

Musical staff for line 57, continuing the melody. The lyrics are: VO GLIA DI PRO VA RE NEL LA PEL LE DI UO MO CO ME SI STA!

59

Musical staff for line 59, featuring a key signature change to two flats (B-flat and E-flat). The melody includes a triplet of eighth notes and a five-note run. The lyrics are: MO CI DU E!... NA NA NA NA... EH EH EH EH, EH EH EH EH!

63

Musical staff for line 63, continuing the melody. The lyrics are: EH EH EH EH, EH EH EH EH! EH EH EH EH! EH EH EH EH!

67

Musical staff for line 67, continuing the melody. The lyrics are: NA NA NA NA... EH EH EH EH!...