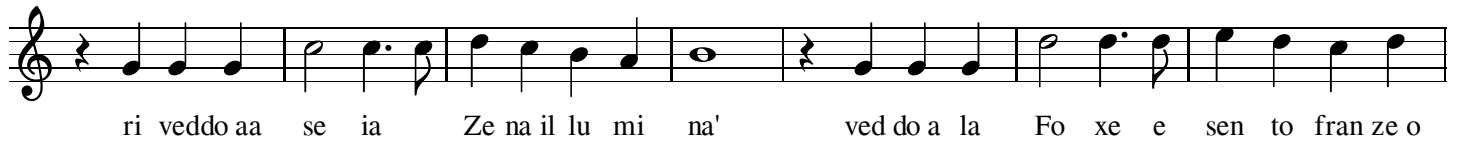


# Ma se ghe Penso

Bruno Lauzi

O l'ea par tio ma sen za una pa lan ca l'ea  
za' tren t'an ni e for se anche ciu' O  
l'ai lot tou pe' met te i da nae aa ban ca pe'  
poi se ne un gior no torna' in zu' e fa se a pa laz zi na e o giar di  
net to co' ram pi zan te e a can tin na e o vin a  
bran da at tac ca' ai eer boi a uso let to pe'  
da ghe una schen na se ia e mat tin ma o fig gio o ghe dixeia no ghe pen  
sa' a Ze na cose ti ghe veu tur na'? Ma se ghe pen so al  
loa mi ved do o ma' ved do i mae mon ti e a cias sa da Nun zia' ri veddo o  
Ri ghi e me se stren se o cheu ved do a Lan ter na a Ca va e las su'o Meu

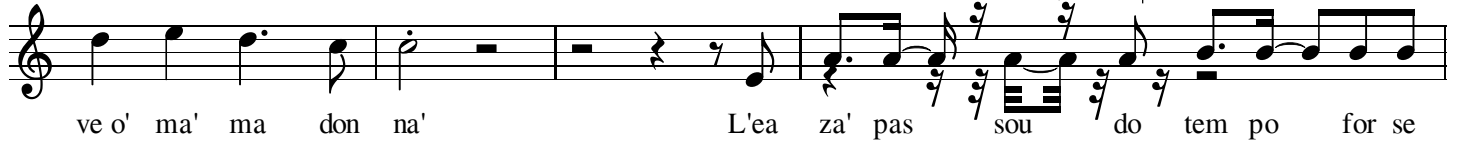
38



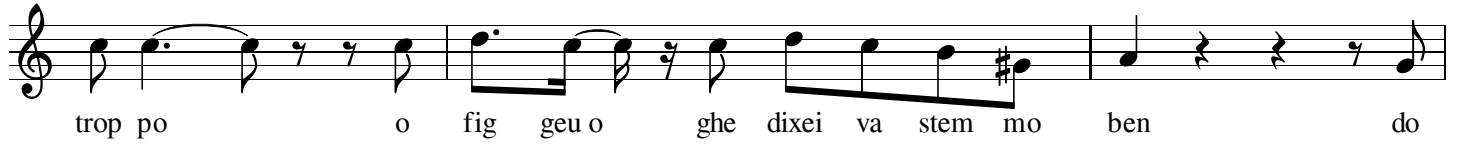
45



52



56



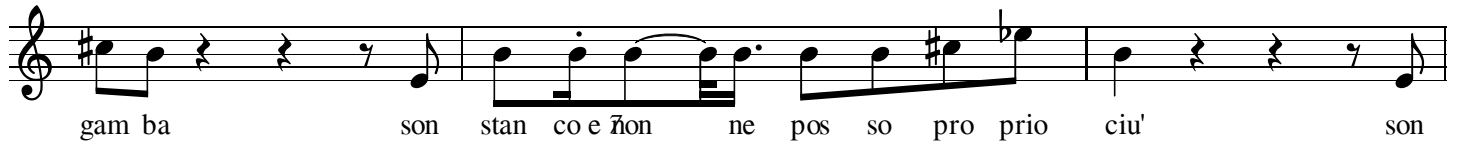
59



61



64



67



70



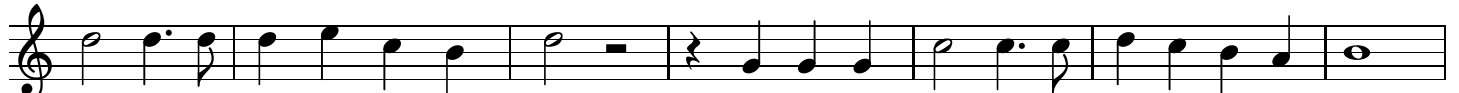
74



81

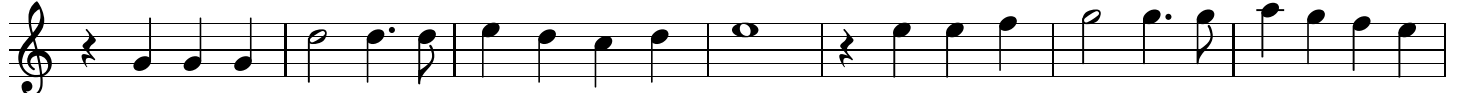


88



ter na a Ca va e las su'o Meu ri veddo aa se ia Ze na il lu mi na'

95




veddo a la Fo xe e sen to fran ze o ma' e al loa mi pen so an cor de ri tor

102



na' a po sa e os se do ve o' ma' ma don na' E sen za tan te

109



co se o l'e' par tio E a Ze na o gh'a for mou o seu' nio